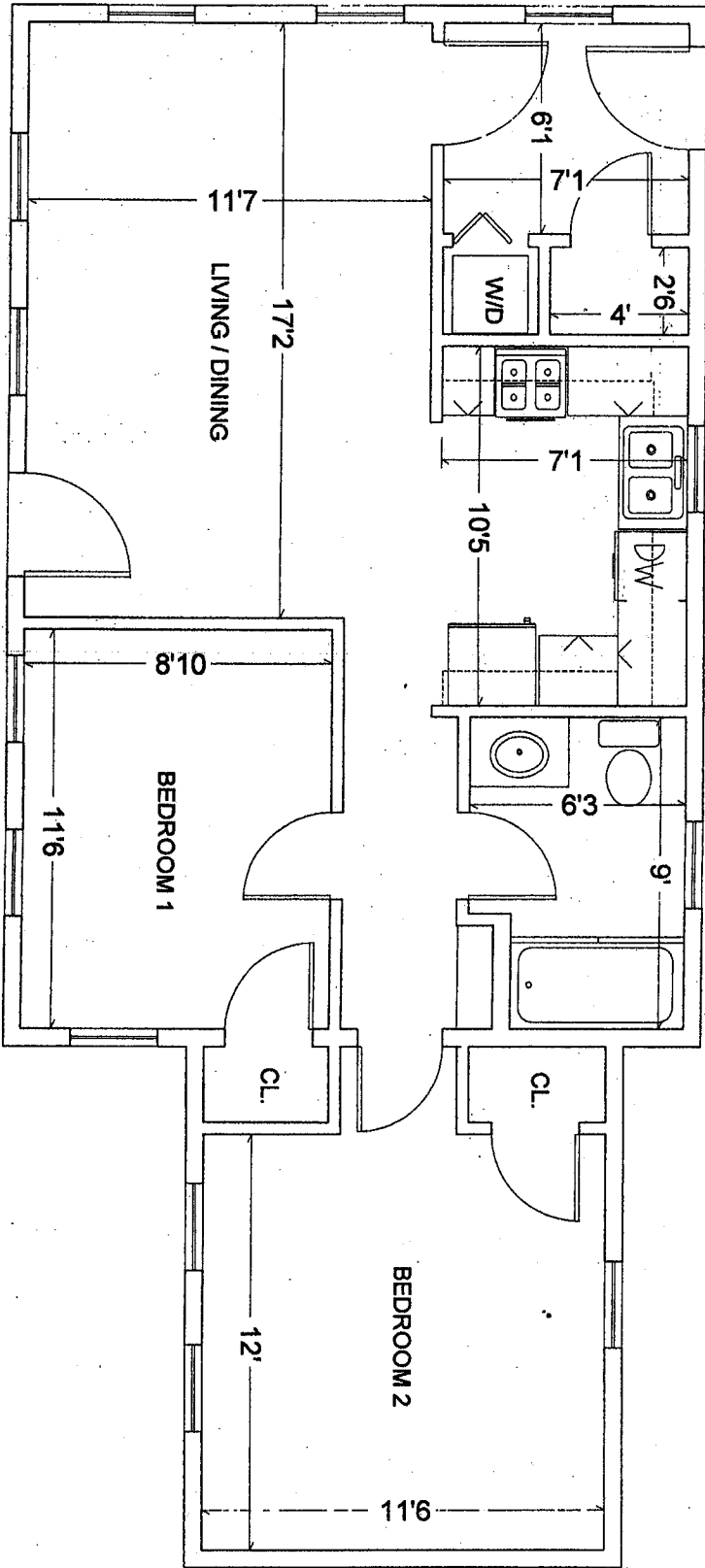




MAPLE HOUSE	
SCALE: 1/4" = 1'	APPROVED BY:
DATE: 8/6/06	DRAWN BY: JBP
	REVISOR:
J.B.P. Properties LLC	DRAWING NUMBER
Sturtevant Vermont	QWV6



**"MAPLE"**

ONE STORY - 780 SQ. FT.

THIS DESIGN IS OWNED BY  
**JBP PROPERTIES, LLC**

SHOREHAM, VERMONT

802-997-5555